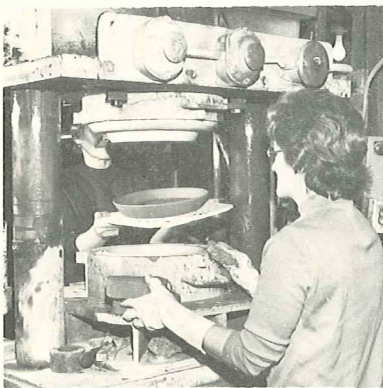


FRANKOMA - An Idea Takes Shape

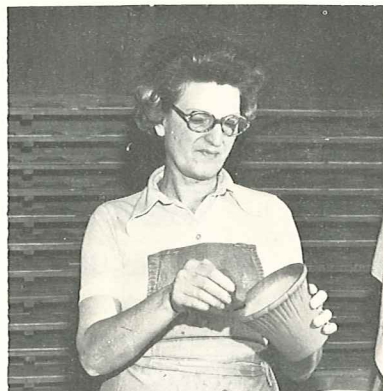
Process of Manufacturing



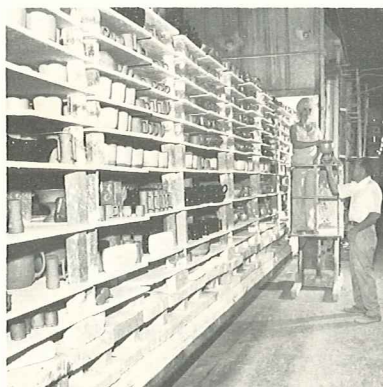
(1) Slip Casting



(3) Pressing



(5) Sponging



(7) Stacking kiln for firing.

Frankoma is hand crafted earthenware pottery. Frankoma is a complete pottery; we dig our own clay in Sapulpa, process it; develop and mix all our own glazes and colors; make our own molds and create our own designs.

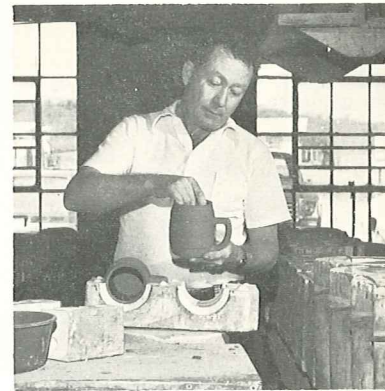
Our pottery is formed in one of **two ways**; casting and pressing. Casting: (1) The clay is mixed with water to make a liquid clay called "slip", then poured into plaster molds. During the 45 minutes the slip sits in the mold, water is absorbed by the mold creating harder clay against the walls of the mold. The slip is then poured out, the clay the water was taken from remains, thus creating the piece. (2) After 4 more hours of drying and preparation the piece is removed from the mold to dry overnight. Pressing: (3) Because of the nature of the clay, some pieces cannot be made by casting. Therefore, we use a hydraulic press. The clay is placed between the two pieces of a mold. The top of the mold lowers up to 50 tons of pressure and forms the piece. All plates and flat pieces are made on the press.

Regardless if a piece is cast or pressed, it must be dried and then trimmed. (4) Each piece is hand trimmed. The rough edges are removed with a paring knife. (5) Then, to complete the smoothing process, the piece is wiped with a wet sponge. Frankoma is unique in that we fire our pottery only once; therefore, after the trimming, it is ready for the glaze, (glaze is the color; glaze is basically a liquid glass that melts and fuses with the clay when it is fired). The glaze is simply poured in and then poured out, and it coats the inside. (6) Then the outside is glazed with a spray gun. The application of the glaze is very important. It must be applied just right, not too thin and not too thick. (7) The pottery is then fired for 18 hours at approximately 2,000 degrees. During the firing process the glaze melts, changes color, and becomes the piece of pottery you enjoy in your home. (8) All Frankoma's designs are original. This requires a complete well equipped mold shop with competent mold makers to effectively complete the designers ideas for production.

Because of the great demand and a desire to always maintain Frankoma as a leader in the ceramic field the plant has recently expanded to 79,000 square feet, employing 140 people who make up the Frankoma Family.

You are cordially invited to tour the plant during working hours.

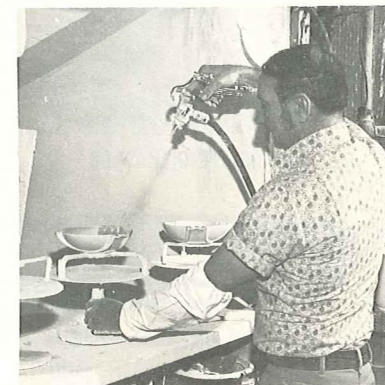
COME SEE US . . .



(2) Removing piece from mold.



(4) Trimming with knife.



(6) Glazing



(8) Making a Mold